

## Han Q 2/0-bu HV 4-6 mm<sup>2</sup> (10 mm<sup>2</sup> opt.)

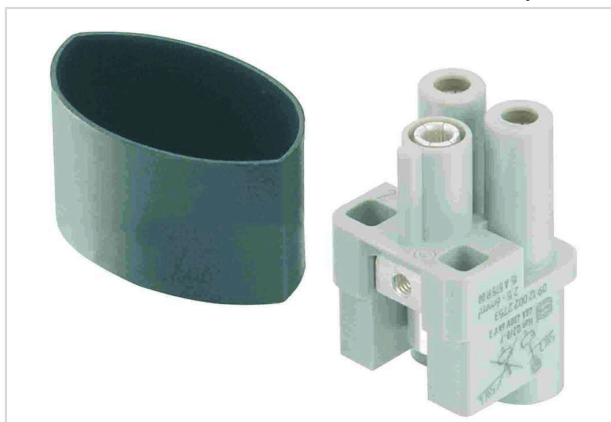


Image is for illustration purposes only. Please refer to product description.

Part number	09 12 002 2752
Specification	Han Q 2/0-bu HV 4-6 mm <sup>2</sup> (10 mm <sup>2</sup> opt.)
HARTING eCatalogue	<a href="https://b2b.harting.com/09120022752">https://b2b.harting.com/09120022752</a>

### Identification

Category	Inserts
Series	Han <sup>®</sup> Q
Identification	2/0 High Voltage

### Version

Termination method	Axial screw termination
Gender	Female
Size	3 A
Number of contacts	2
PE contact	Yes
Pack contents	With heat shrink tube

### Technical characteristics

Conductor cross-section	4 ... 10 mm <sup>2</sup>
Rated current	40 A
Rated voltage	830 V
Rated impulse voltage	6 kV
Pollution degree	3
Rated voltage acc. to UL	600 V
Rated voltage acc. to CSA	600 V
Insulation resistance	>10 <sup>10</sup> Ω
Contact resistance	≤1 mΩ
Tightening torque	1.8 Nm



**Pushing Performance**  
Since 1945

## Technical characteristics

Limiting temperature	-40 ... +125 °C
Mating cycles	≥500

## Material properties

Material (insert)	Polycarbonate (PC)
Colour (insert)	RAL 7032 (pebble grey)
Material (contacts)	Copper alloy
Surface (contacts)	Silver plated
Material flammability class acc. to UL 94	V-0
RoHS	compliant with exemption
RoHS exemptions	6(c): Copper alloy containing up to 4 % lead by weight
ELV status	compliant with exemption
China RoHS	50
REACH Annex XVII substances	Not contained
REACH ANNEX XIV substances	Not contained
REACH SVHC substances	Yes
REACH SVHC substances	Lead
ECHA SCIP number	5dbb3851-b94e-4e88-97a1-571845975242
California Proposition 65 substances	Yes
California Proposition 65 substances	Lead
Fire protection on railway vehicles	EN 45545-2 (2020-08)
Requirement set with Hazard Levels	R22 (HL 1-3) R23 (HL 1-3)

## Specifications and approvals

Specifications	IEC 60664-1 IEC 61984
UL / CSA	UL 1977 ECBT2.E235076 CSA-C22.2 No. 182.3 ECBT8.E235076
Approvals	DNV GL

## Commercial data

Packaging size	1
Net weight	18.86 g
Country of origin	Germany



**Pushing Performance**  
Since 1945

Commercial data

European customs tariff number	85366990
GTIN	5713140016637
ETIM	EC000438
eCl@ss	27440205 Contact insert for industrial connectors