



Pushing Performance  
Since 1945

# Product Declaration Certificate

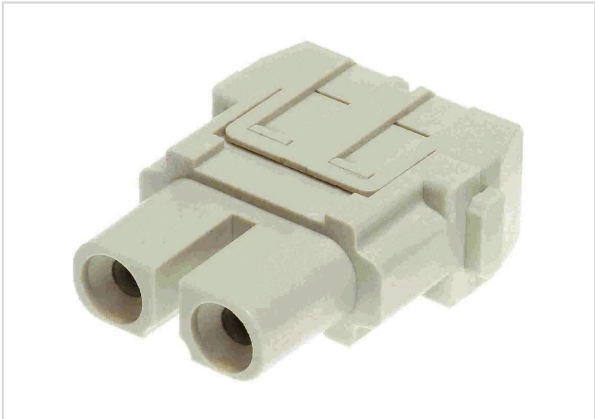


Image is for illustration purposes only. Please refer to product description.

|                    |   |
|--------------------|---|
| Part number        | 09 14 002 2703  |
| Specification      | Han 40A PCB module, female  |
| HARTING eCatalogue | <a href="https://b2b.harting.com/09140022703">https://b2b.harting.com/09140022703</a> |

|                                      |  |
|--------------------------------------|--|
| RoHS                                 | compliant with exemption                               |
| RoHS exemptions                      | 6(c): Copper alloy containing up to 4 % lead by weight |
| ELV status                           | compliant with exemption                               |
| China RoHS                           | 50   |
| REACH Annex XVII substances          | Not contained  |
| REACH ANNEX XIV substances           | Not contained  |
| REACH SVHC substances                | Yes  |
| REACH SVHC substances                | Lead   |
| ECHA SCIP number                     | 5dbb3851-b94e-4e88-97a1-571845975242                   |
| California Proposition 65 substances | Yes  |
| California Proposition 65 substances | Lead   |
| California Proposition 65 substances | Nickel   |

RoHS: Directive 2011/65/EU with all amending directives and regulations in force at the declaration's creation date.

ELV status: Directive 2000/53/EC with all amending directives and regulations in force at the declaration's creation date.

REACH ANNEX: Regulation (EU) No. 1907/2006 with all amending directives and regulations in force at the declaration's creation date.

REACH SVHC substances: We applied "Candidate List of substances of very high concern for Authorisation" of ECHA valid on the declaration's creation date.

ECHA SCIP: Article notification number in the SCIP Data base of the European Chemicals Agency (ECHA) according to Waste Frame Directive 2008/89/EC with amended directive 2018/851 in Article 9