



Pushing Performance  
Since 1945

# SEK-18 SV FE TYPA ZGL 06P PL2

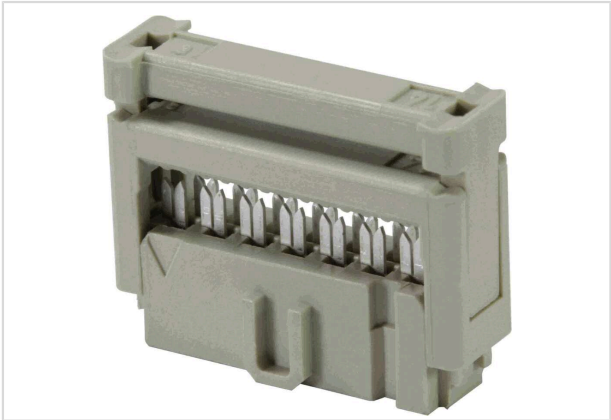


Image is for illustration purposes only. Please refer to product description.

Part number	09 18 506 6813
Specification	SEK-18 SV FE TYPA ZGL 06P PL2
HARTING eCatalogue	<a href="https://b2b.harting.com/09185066813">https://b2b.harting.com/09185066813</a>

## Identification

Category	Connectors
Series	SEK
Element	Female connector

## Version

Connection type	PCB to cable
Number of contacts	6
Strain relief	With strain relief clamp
Details	for IDC flat cable 1.27 mm (0.050") pitch AWG 28/7 - AWG 26/7

## Technical characteristics

Contact rows	2
Contact spacing (termination side)	2.54 mm
Contact spacing (mating side)	1.27 mm
Rated current	2.5 A
Insulation resistance	>10 <sup>9</sup> Ω
Contact resistance	≤20 mΩ
Limiting temperature	-55 ... +125 °C
Insertion and withdrawal force	≤12 N
Performance level	2 acc. to IEC 60603-13
Mating cycles	≥250



Pushing Performance  
Since 1945

## Technical characteristics

Test voltage $U_{r.m.s.}$	1 kV
Isolation group	IIIa ( $175 \leq CTI < 400$ )

## Material properties

Material (insert)	Thermoplastic resin (PBT)
Colour (insert)	Grey
Material (contacts)	Copper alloy
Surface (contacts)	Au over Ni Mating side Sn over Ni Termination side
Material flammability class acc. to UL 94	V-0
RoHS	compliant
ELV status	compliant
China RoHS	e
REACH Annex XVII substances	Not contained
REACH ANNEX XIV substances	Not contained
REACH SVHC substances	Not contained
California Proposition 65 substances	Yes
California Proposition 65 substances	Antimony trioxide Nickel
Requirement set with Hazard Levels	R26

## Specifications and approvals

Specifications	IEC 60603-13
UL / CSA	UL 1977 ECBT2.E102079 CSA-C22.2 No. 182.3 ECBT8.E102079
Railway classification	F3/I3

## Commercial data

Packaging size	100
Net weight	1.3 g
Country of origin	Romania
European customs tariff number	85366990
GTIN	5713140026155
ETIM	EC002637



**Pushing Performance**  
Since 1945

## Commercial data

eCl@ss

27460202 PCB connector (conductor connection)