

Han Split Hood 24 B

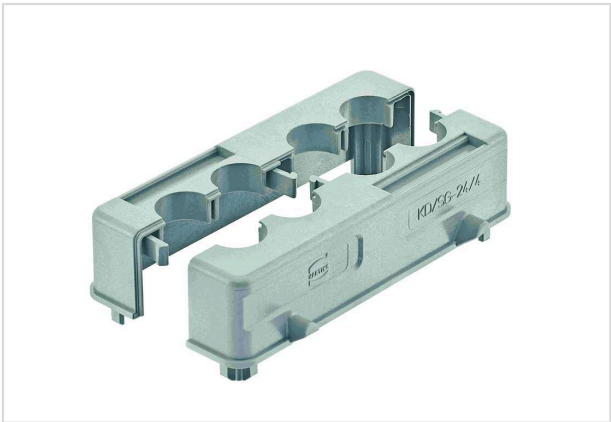


Image is for illustration purposes only. Please refer to product description.

| | |
|--------------------|---|
| Part number | 09 30 024 0408 |
| Specification | Han Split Hood 24 B |
| HARTING eCatalogue | https://b2b.harting.com/09300240408 |

Identification

| | |
|--------------------------|----------------------------|
| Category | Hoods/Housings |
| Series of hoods/housings | Han® B |
| Type of hood/housing | Panel feed through housing |
| Type | High construction |

Version

| | |
|----------------------|--|
| Size | 24 B |
| Version | Top entry |
| Cable entry | 4x Integrated |
| Locking type | Double locking lever |
| Field of application | Standard hoods/housings for industrial connectors |
| Details | Please order cable entry seals separately. IP54 when mounted vertically |
| Pack contents | 2 split hood halves |

Technical characteristics

| | |
|--|--|
| Limiting temperature | -40 ... +125 °C |
| Note on the limiting temperature | For use as a connector according to IEC 61984. |
| Degree of protection acc. to IEC 60529 | IP65 |
| Type rating acc. to UL 50 / UL 50E | 4 |
| | 4X |
| | 12 |
| Cable diameter | 17.8 mm |



Pushing Performance
Since 1945

Material properties

| | |
|-------------------------------------|----------------------------|
| Material (hood/housing) | Polycarbonate (PC) |
| Colour (hood/housing) | RAL 7037 (dust grey) |
| RoHS | compliant |
| ELV status | compliant |
| China RoHS | e |
| REACH Annex XVII substances | Not contained |
| REACH ANNEX XIV substances | Not contained |
| REACH SVHC substances | Not contained |
| Fire protection on railway vehicles | EN 45545-2 (2020-08) |
| Requirement set with Hazard Levels | R1 (HL 1-3) R7 (HL 1-3) |

Specifications and approvals

| | |
|----------|--|
| UL / CSA | UL 1977 ECBT2.E235076 CSA-C22.2 No. 182.3 ECBT8.E235076 |
| CE | Yes |

Commercial data

| | |
|--------------------------------|--|
| Packaging size | 1 |
| Net weight | 52.4 g |
| Country of origin | Germany |
| European customs tariff number | 85389099 |
| GTIN | 5713140047013 |
| ETIM | EC000437 |
| eCl@ss | 27440202 Shell for industrial connectors |