

# Han 6HvES-F

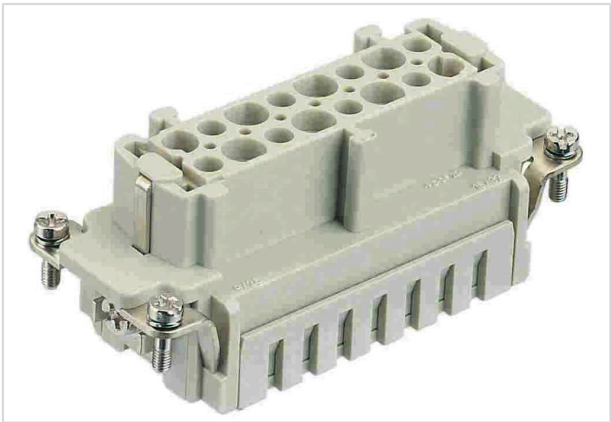


Image is for illustration purposes only. Please refer to product description.

|                    |   |
|--------------------|---|
| Part number        | 09 34 006 2716  |
| Specification      | Han 6HvES-F   |
| HARTING eCatalogue | <a href="https://b2b.harting.com/09340062716">https://b2b.harting.com/09340062716</a> |

## Identification

|          |            |
|----------|------------|
| Category | Inserts    |
| Series   | Han® Hv ES |

## Version

|                                   |  |
|-----------------------------------|--|
| Termination method                | Cage-clamp termination                                     |
| Gender                            | Female   |
| Size                              | 16 B   |
| Number of contacts                | 8  |
| Number of power contacts          | 6  |
| Number of special contacts        | 2  |
| Specification of special contacts | Relay contact  |
| PE contact                        | Yes  |
| Details                           | Not mating compatible to Han Hv E® screw/crimp termination |

## Technical characteristics

|                           |                   |
|---------------------------|-------------------|
| Conductor cross-section   | 0.14 ... 2.5 mm²  |
| Conductor cross-section   | AWG 26 ... AWG 14 |
| Rated current             | 16 A              |
| Rated voltage             | 830 V             |
| Rated impulse voltage     | 8 kV              |
| Pollution degree          | 3                 |
| Rated voltage acc. to UL  | 600 V             |
| Rated voltage acc. to CSA | 600 V             |



**Pushing Performance**  
Since 1945

## Technical characteristics

|                       |                          |
|-----------------------|--------------------------|
| Insulation resistance | $>10^{10} \Omega$        |
| Contact resistance    | $\leq 3 \text{ m}\Omega$ |
| Stripping length      | 7 ... 9 mm               |
| Limiting temperature  | -40 ... +125 °C          |
| Mating cycles         | $\geq 500$               |

## Material properties

|   |   |
|---|---|
| Material (insert)                         | Polycarbonate (PC)  |
| Colour (insert)                           | RAL 7032 (pebble grey)  |
| Material (contacts)                       | Copper alloy  |
| Surface (contacts)                        | Silver plated   |
| Material flammability class acc. to UL 94 | V-0   |
| RoHS                                      | compliant with exemption  |
| RoHS exemptions                           | 6(c): Copper alloy containing up to 4 % lead by weight            |
| ELV status                                | compliant with exemption  |
| China RoHS                                | 50  |
| REACH Annex XVII substances               | Not contained   |
| REACH ANNEX XIV substances                | Not contained   |
| REACH SVHC substances                     | Yes   |
| REACH SVHC substances                     | Potassium 1,1,2,2,3,3,4,4,4-nonafluorobutane-1-sulphonate<br>Lead |
| ECHA SCIP number                          | 1e38d35d-d1be-4585-8e03-95faccd739bf                              |
| California Proposition 65 substances      | Yes   |
| California Proposition 65 substances      | Lead<br>Nickel  |
| Fire protection on railway vehicles       | EN 45545-2 (2020-08)  |
| Requirement set with Hazard Levels        | R22 (HL 1-3)<br>R23 (HL 1-3)                                      |

## Specifications and approvals

|                |                          |
|----------------|--------------------------|
| Specifications | IEC 60664-1<br>IEC 61984 |
| UL / CSA       | UL 1977 ECBT2.E235076    |



**Pushing Performance**  
Since 1945

Commercial data

|                                |   |
|--------------------------------|---|
| Packaging size                 | 1   |
| Net weight                     | 76.26 g   |
| Country of origin              | Germany   |
| European customs tariff number | 85366990  |
| GTIN                           | 5713140053250                                     |
| eCl@ss                         | 27440205 Contact insert for industrial connectors |