

Han Yellock Adapter Frame Han-Modular

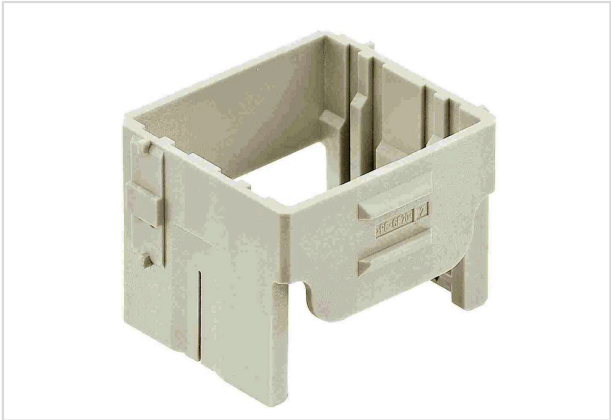


Image is for illustration purposes only. Please refer to product description.

Part number	11 00 300 0301
Specification	Han Yellock Adapter Frame Han-Modular
HARTING eCatalogue	https://b2b.harting.com/11003000301

Identification

Category	Accessories
Series	Han-Yellock®
Type of accessory	Adapter frames
Description of the accessory	for bulkhead mounted housings for Han-Yellock® 30

Material properties

Material (accessories)	Polycarbonate (PC)
Colour (accessories)	RAL 7032 (pebble grey)
Material flammability class acc. to UL 94	V-0
RoHS	compliant
ELV status	compliant
China RoHS	e
REACH Annex XVII substances	Not contained
REACH ANNEX XIV substances	Not contained
REACH SVHC substances	Not contained
Fire protection on railway vehicles	EN 45545-2 (2020-08)
Requirement set with Hazard Levels	R22 (HL 1-3) R23 (HL 1-3)

Specifications and approvals

Specifications	IEC 60664-1 IEC 61984
----------------	--------------------------



Pushing Performance
Since 1945

Specifications and approvals

Approvals DNV GL

Commercial data

Packaging size	2
Net weight	9 g
Country of origin	Germany
European customs tariff number	85389099
GTIN	5713140109179
ETIM	EC002310
eCl@ss	27440210 Fixing element for industrial connectors