

More, Accessible Ways to Obtain Equipment Statuses

Monitor in real-time and connect with database



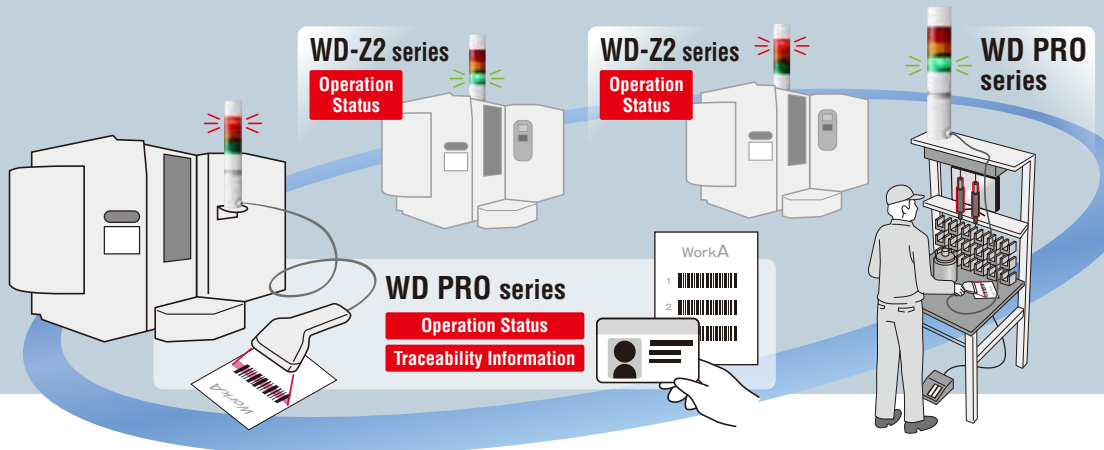
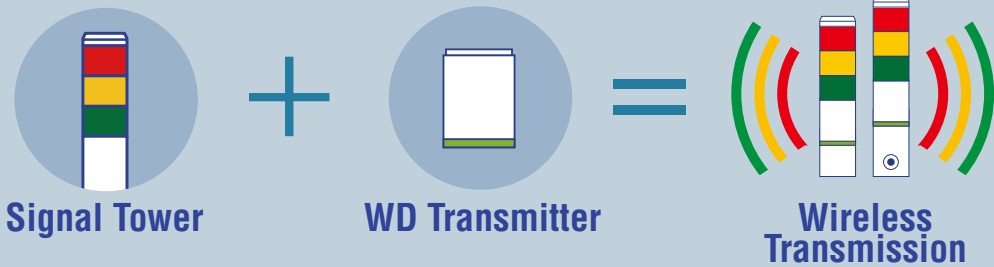
New WDR-LE-Z2-PRO

- **Real-time** Equipment Status Collection
- **PoE** Capability
- Real-time Status Display on **Andon Screen**
- Quality of Wireless **Connection** Diagnostics
- Collaboration Functions Including Modbus/TCP and **MySQL Database**

MAKE SMARTER, QUICKER DECISIONS



WD PRO Series



PoE Capability

The WD PRO Receiver can access both power and data through a single Ethernet cable so that wiring space and costs can be minimized.



Device Setup Browser

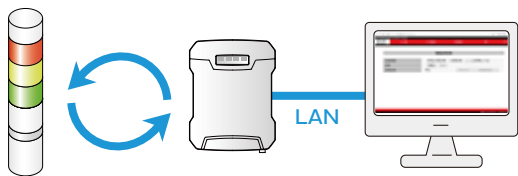
Connect the WD PRO Receiver to a PC via LAN cable to access the setup browser where various settings of the receiver and transmitter can be configured.

*Not compatible with Lite series or when connected via USB.



Wireless Quality Diagnostics

Displays the quality of wireless connection between the receiver and transmitter(s) using a 5-level evaluation system. Up to 72 hours of diagnosis data can be recorded so users can determine when and where the installation environment needs to be modified.

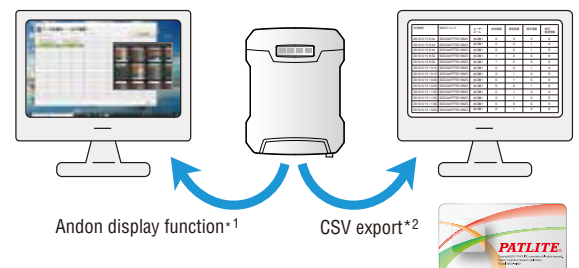


User Name	IEEE Address	Rank				
		10:00	10:05	10:10	10:15	10:20
WORKER1	88:25:3D:FF:8A:8E:8A	5	4	3	2	1
WORKER2	88:25:3D:FF:8A:8E:8B	4	3	2	1	0
WORKER3	88:25:3D:FF:8A:8E:8C	3	2	1	0	0

* Diagnostics occur every 10 minutes during long-period sessions.
 * During diagnostics, a large amount of data is processed which may affect the data acquisition function.

Andon Display

Real-time light and buzzer statuses of all connected signal towers can be displayed onto your computer screen. This can be done simultaneously with the CSV data collection.

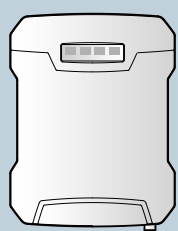


*1 This function is not available for Lite models (WDR-LE-Z2-PRO-L).
 *2 Third-party software required to export CSV files.



WITH REAL-TIME DATA

Run multiple applications simultaneously

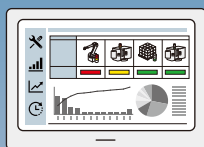


Receiver

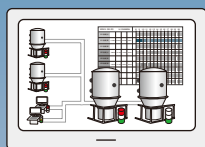
LAN



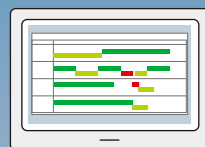
Wide variety of collaboration protocols



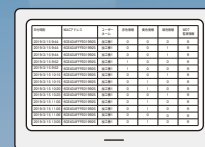
MySQL Database



Modbus/TCP



SOCKET communication
WDR and WDR PRO protocols



CSV export
(WDS-WIN01 required)

Wireless communication with up to 30 transmitters

* SOCKET communication (WDR protocol) and CSV export cannot be performed simultaneously.



WD PRO Receivers

WDR-LE-Z2-PRO

WDR-LE-Z2-PRO-L
(Lite version)

Compatible in **33 countries** (as of April 2020)

Up to **30 transmitters** can be connected

Connection method: **LAN/USB**

WD System Setup Software



WD System Setup Software
WDS-WIN01 Ver. 1.04 or later

* Some contents of the software requires a paid license.

Compatible Transmitters

Wireless Data Acquisition System

WD-Z2 Series



WDT-6LR-Z2
WD-Z2 Transmitter Unit

Compatible with
LR6 Series
Signal Towers

Maximum distance of wireless transmission between units:
30m *



WDT-5LR-Z2
WD-Z2 Transmitter Unit

Compatible with
LR5 Series
Signal Towers

Maximum distance of wireless transmission:
30m *

WD-Z2 Transmitter



Wireless Data Acquisition System

WD PRO Series



WDT-6LR-Z2-PRO
WD PRO Transmitter Unit

Compatible with
WD PRO Series
Base Unit

Maximum distance of wireless transmission:
30m *



WDB-D80S-PRO
WD PRO Contact Input - Serial Communication Base Unit

WD PRO Transmitter

WD PRO Base Unit



* Due to the characteristics of radio waves, this value is only a reference point.

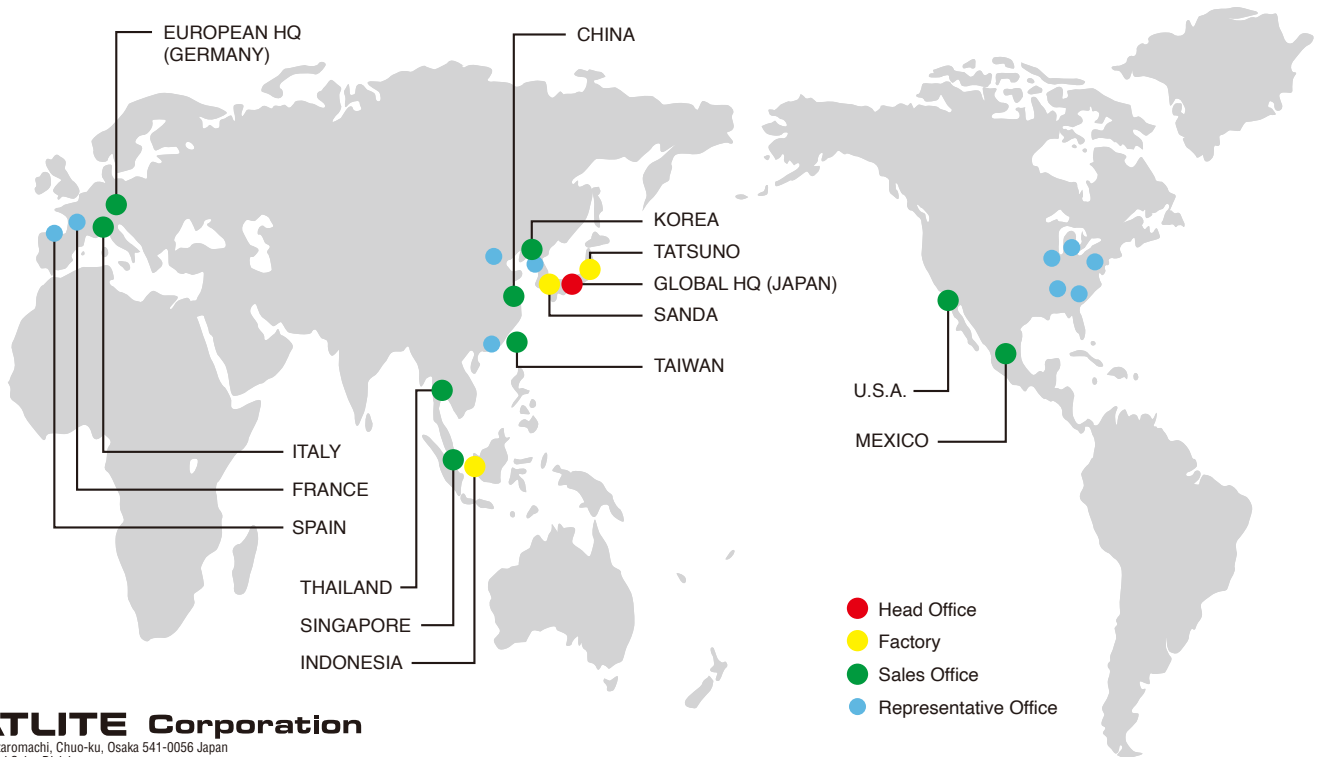
Specifications

Model	Wireless Data Acquisition System WD PRO Receiver WDR-LE-Z2-PRO	Wireless Data Acquisition System WD PRO Receiver (Lite version) WDR-LE-Z2-PRO-L
Power Supply Input	24V DC / USB / PoE	
Mounting Method	Horizontal / Wall / Ceiling	
Network Communication Method	10BASE-T-twisted pair ethernet / 100BASE-TX- CAT5 cable / 1000BASE-T- also CAT5	
Transmitter Connection	Maximum 30 units	
Communication Range	Line of sight, Approximately 30m *1	
IP Address Setting	Manual setup / DHCP auto configuration	
Operating Ambient Temperature	-10°C~+50°C (AC Adaptor accessory : 0°C~+40°C)	
Protection Rating	IP20	
Wireless Connection Diagnostics	Real-time diagnosis / Long-period diagnosis (1~72 hours)	
Transmitter Wireless Settings	Built-in setup browser / WDS-WIN01 software	WDS-WIN01 Software
Host System Communication	<ul style="list-style-type: none"> • CSV file *Use WDS-WIN01 • SOCKET communication (WDR protocol) • SOCKET communication (WDR PRO protocol) • Database linkage (MySQL) • Modbus / TCP communication 	<ul style="list-style-type: none"> • CSV file *Use WDS-WIN01 • SOCKET communication (WDR protocol)
Andon Display	✓	—

Run multiple applications simultaneously

*1 Due to the characteristics of radio waves, this value is only a reference point.

PATLITE Global Network



PATLITE Corporation

4-1-3, Kyutaromachi, Chuo-ku, Osaka 541-0056 Japan
International Sales Division
TEL.+81-6-7711-8953 FAX.+81-6-7711-8961 E-mail: overseas@patlite.co.jp

PATLITE (U.S.A.) Corporation

20130 S. Western Ave. Torrance, CA 90501, U.S.A.
TEL.+1-310-328-3222 FAX.+1-310-328-2676 E-mail: sales@patlite.com

PATLITE (SINGAPORE) PTE LTD

No.2 Leng Kee Road, #05-01 Thye Hong Centre, Singapore 159086
TEL.+65-6226-1111 FAX.+65-6324-1411 E-mail: sales@patlite.com.sg

PATLITE (CHINA) Corporation

Room 1102-1103, No.55, Lane 777, Guangzhong Road (West), Zhabei District, Shanghai, China 200072
TEL.+86-21-6630-8969 FAX.+86-21-6630-8938 E-mail: sales@patlite.cn

PATLITE Europe GmbH

Am Soeldnermoos 8, D-85399 Hallbergmoos, Germany
TEL.+49-811-9981-9770-0 FAX.+49-811-9981-9770-90 E-mail: info@patlite.eu
WEEE Reg. Nr. 67267160

PATLITE KOREA CO., LTD.

A-2603, Daesung D-POLIS, 606, Seobusaet-gil, Geumcheon-gu, Seoul, 08504, Korea
TEL.+82-2-523-6636 FAX.+82-2-861-9919 E-mail: sales@patlite.co.kr

PATLITE TAIWAN CO., LTD.

2F-1, No.215, Sec. 2, Chengde Rd., Datong Dist., Taipei City 10364, Taiwan (R.O.C.)
TEL.+886-2-2555-1611 FAX.+886-2-2555-1621 E-mail: info@patlite.tw

PATLITE (THAILAND) CO., LTD.

Olympia Thai Tower, 15th Floor 444 Ratchadapisek Road Samsennoh, Huay Kwang Bangkok 10310, Thailand
TEL.+66-2-541-5431 FAX.+66-2-541-5429 E-mail: sales_150716@patlite.co.th

PATLITE MEXICO S.A. de C.V.

Plaza de La Paz No. 102, int. 712 Guanajuato Puerto Interior, Silao, Gto, C.P.36275, Mexico
TEL.+52-472-748-9124 E-mail: ventas@patlite.com.mx

www.patlite.com

- PATLITE, the PATLITE logo are either registered trademarks or trademarks of PATLITE Corporation in JAPAN and/or other countries.
- The names of other companies and products are trademarks or registered trademarks of their respective companies.
- MySQL is a registered trademark of Oracle Corporation and its subsidiaries and affiliates in the United States and other countries.

CAUTION

To ensure correct use of these products, read the "Instruction Manual" prior to use. Failure to follow all safeguards can result in fire, electric shock, or other accidents. Specifications are subject to change without notice.

O-AJ02A EN 2004